



Helpo Mobile Slim Stand with Shelf

Fixed height stand with shelf mounted on castors



DESCRIPTION

Interactive Flat Panel Stands are perfect integrators of technology inside a modern learning space. This slim model with shelf was specially designed to hold Accessories in narrow rooms, learning aids or videoconference cameras inside a classroom. Being mobile, makes it the best solution for collaboration and flexible concepts. With this support, the Interactive Flat Panel gains versatility and can be wheeled from space to space easily and effortlessly, according to the group's needs.



FIXED HEIGHT



MAX WEIGHT 80 KG



42" TO 86"
SCREENS



EASY TO MOUNT

Helpo Mobile Slim Stand with Shelf

Fixed height stand with shelf mounted on castors

PRODUCT SPECIFICATIONS

Reference	SCIBD3110
Product Specifications	
Maximum Weight Supported	80 kg
Fixed Height	Adjustable manually: 621 mm to 1564 mm
VESA	Min. 100x100 mm; Max. 800x500 mm
Product Size Depth	653 mm
Product Size Height	1704 mm
Product Size Width	1100 mm
Shelf Size	240x670 mm
Shelf's Maximum weight supported	20 kg
Package Dimensions Width	1000 mm
Package Dimensions Height	1800 mm
Package Dimensions Depth	250 mm
IP Net Weight	25 kg
IP Gross Weight	30 kg
Pack	1 unit

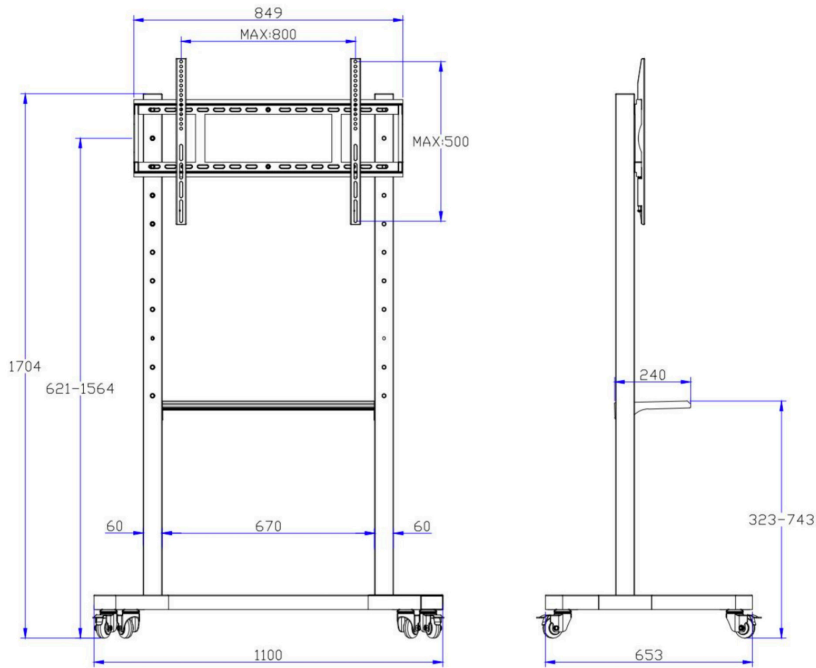
OTHER IMAGES



Helpo Mobile Slim Stand with Shelf

Fixed height stand with shelf mounted on castors

OTHER IMAGES



Note: All sizes are in millimeters